



GEORGIA
SOUTHERN
UNIVERSITY

Software Testing:

How to design a software testing
process for everyone

Wilhelmina Randtke, Head of Libraries Technologies and Systems, Georgia Southern University Libraries
WOLFcon 2023, August 24, 2023.

Definition of software testing

Software Testing

= make sure the software does what it's supposed to do, without doing anything extra

Why do software testing?

Why do software testing?

- **Better service:** Anything special that your library is doing will get attention early and comprehensively. (ie. special use of MARC local fields at your library, ie. configuring facets just so in your discovery tool)
- **Better scheduling:** You can plan out the time to do testing, instead of having unscheduled fixes later.
 - Typically, schedule testing just after a planned change (software upgrade, a new feature, a configuration change, etc.).

Who is talking about
software testing?

Who is talking about software testing?



software testing diagram

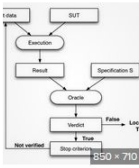
Big complicated projects tend to post more info!

Q All Images Videos News Maps Shopping Settings

All regions Safe search: moderate Any time All sizes All colors All types All layouts All Licenses



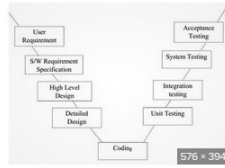
Traditional software testing diagram
researchgate.net 646 x 1177



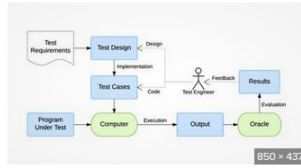
1-Software Testing Process
researchgate.net 850 x 710



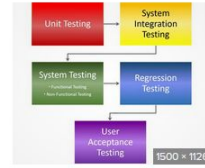
Software QA Life and Experience
softwareqa.life.blogspot.com 474 x 368



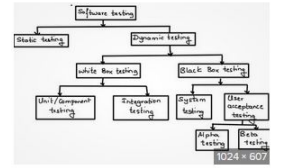
V-Model for Software Testing Process
researchgate.net 576 x 394



1: Usual software testing workflow
Download Scientific Data 850 x 437



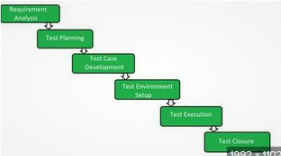
System And Acceptance Testing
mostfreeware.blogspot.com 1500 x 1126



Software Testing Classification by h2kinfosys
itonlineinrainn tutorials.wordpress.com 1024 x 607



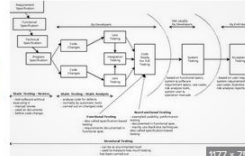
Software testing | Master...
subscription.peckpub.com 586 x 586



Software Testing Life Cycle (STLC) - GeeksforGeeks
geeksforgeeks.org 1992 x 1122



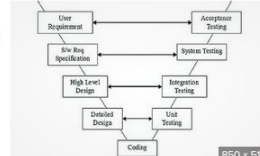
Software Testing Life Cycle
itguruvn 954 x 981



Who needs Visk, when you can use Dia - Pat...
patwalsh.co.uk 1177 x 750



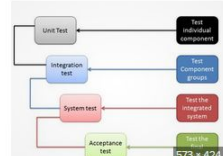
PPT - Software Testing Strategies
slideserve.com 1024 x 768



V-model of software testing
Download Scientific Data 850 x 519



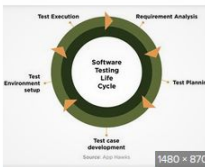
Levels of Software Testing - GeeksforGeeks
geeksforgeeks.org 586 x 445



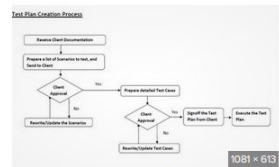
Levels of Testing in Software Testing
codecadem.com 573 x 424



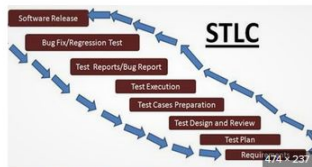
Pruebas de software
barcelona4geeks.com 231 x 451



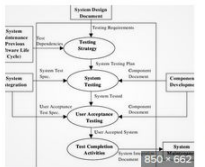
An Introduction to Software Testing
jelvik.com 1480 x 870



Flow Chart - Software Testing Concept
narayan-singh.blogspot.com 1081 x 613



Practical Software Testing QA Process Flow
softwaretestinghelp.com 474 x 247



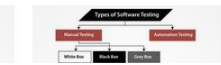
System testing process overview
researchgate.net 850 x 662



Types of software Testing
thecodibus.info 581 x 423



What is Quality Assurance Software Testing? QA Process
nekio.com 2048 x 1070



Who is talking about software testing?

Big complicated projects tend to post more info!

Guides

- Guides overview
- Guides
- FAQs

GitHub and Twitter:

- folio-org
- folio_1sp

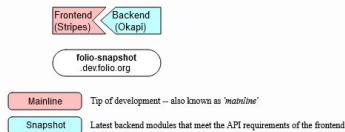
Build, test, and deployment infrastructure

Overview

This document describes the implementation, processes, and automated workflow for FOLIO projects maintained in the [folio-org GitHub](#) repositories. The [release procedures](#) are separately summarised.

The build, test, release, and deployment processes are, in large part, orchestrated and automated by Jenkins. A Nexus repository is used to host FOLIO Maven artifacts and NPM packages, and Docker Hub is used as the Docker registry for Docker images. AWS provides the infrastructure used to host Jenkins and Nexus, as well as permanent and on-demand resources for FOLIO integration testing and demos.

Software build pipeline



The project is using a continuous integration – or CI – system (described below) that builds new versions of the software reference environments that are used for various purposes by the developers, the product owners, and the testers.

In order to fully understand this diagram, keep in mind that there are two parts to FOLIO – the part called "Stripes" which The Okapi backend is secured during the CI process. For more information on securing Okapi see the [folio-install](#) and [file](#). Direct access is via URLs such as <https://folio-snapshot-okapi.dev.folio.org>

Another part that is not indicated in this diagram are various "edge" modules, which bridge the gap between some specif edge services are accessed via port 8000. The API key is explained at [edge-common](#). The edge APIs are deployed such is being used which ignores the salt portion of the key).

- Top
- Overview
- Software build pipeline
- Reference environments
- Explanation
- Developer scratch environment
- Off-schedule rebuilds
- folio-snapshot
 - Platform hourly build
 - Included module versions
 - folio-snapshot-2
 - folio-orchid
 - folio-rosana
 - Other notes
- Jenkins
- Monitoring and performance
- Nexus Repository Manager
- Docker Hub

Platform hourly build

The server is built every day, to finish about 02 03 UTC. (See Jenkins job: [folio-snapshot](#) which starts about 01:24 UTC.)

The set of frontend modules are those listed in the "snapshot" branch of the Stripes Platform.

The "snapshot" branch of the Stripes Platform is rebuilt every hour, starting about 19 minutes past the hour and finishing about 50 minutes past (see Jenkins job: [build-platform-complete-snapshot](#)). If successful, then this regenerate the yarn lock and install files of the Platform (see [note above](#)), to be utilised by the abovementioned "folio-snapshot" job. So if there is an urgent need to [rebuild "folio-snapshot"](#) outside of normal automation, so include a new snapshot of a module, then this build needs to have run before the "folio-snapshot" build is re-run.

Included module versions

The folio-snapshot builds consist of the master branch of each frontend module at that time, paired with the latest version of backend modules that meet the dependency requirements of the frontend (as determined by the preceding [hourly platform build](#)). There may still be errors because of API differences that aren't covered by the dependency requirements.

folio-snapshot-2

<https://folio-snapshot-2.dev.folio.org/>

This is constructed in the same manner as "folio-snapshot" (see its [explanation](#)), but approximately 12-hours later.

The server is built every day, to finish about 14 00 UTC. (See Jenkins job: [folio-snapshot-2](#) which starts about 13:21 UTC.)

The folio-snapshot-latest is an alias for folio-snapshot-2.

folio-orchid

<https://folio-orchid.dev.folio.org/>

This is an environment for the latest FOLIO Release R1 2023 Orchid. Each rebuild will pick up any hotfix updates that may have been released.

Who is talking about software testing?

If a test procedure covers every workflow...

... it's going to be long and complicated.

If a test procedure covers someone else's workflow...

... it probably doesn't cover your workflow.

A Simple Approach

A Simple Approach

- 1) Take your own library's training material.
- 2) Click through each task that you train employees on.

A Simple Approach

- You control the time commitment.
 - You can predict how long it will take, and you can prioritize what to test.
- You will test out your library's most important tasks. If you train someone on it, then it's important to you.
- Your instructions probably already have screenshots.
 - If anything goes wrong, you have a screenshot of what was supposed to happen. You can send that to tech support. You can send that to someone who doesn't work at your library. Tech support can see exactly what was supposed to happen.
- Anything custom at your library is already in your instructions.
 - Your locations are there. Quirks about how patron identifiers are assigned are *there*. What options are in a customized drop down are there.

Two Examples

Example: Deeper in the Tech



FL-Islandora Guides

(Redirected from Main Page)

Welcome to FL-Islandora Guides (FIG), a FLVC-maintained wiki providing detailed user documentation and how-tos to university & college librarians and library staff. Browse the list of chapters below or use the search box to retrieve a phrase or keyword.



navigation

- [Main page](#)
- [Community portal](#)
- [Current events](#)
- [Recent changes](#)
- [Random page](#)
- [Help](#)

search

toolbox

- [What links here](#)
- [Related changes](#)
- [Special pages](#)
- [Printable version](#)
- [Permanent link](#)

1. FL-Islandora Overview

- a. [What Islandora is](#)
- b. [FL-Islandora architecture](#)
- c. [Site properties and policy](#)
- d. [Content objects and collection objects](#)
- e. [Test instance and test users](#)

2. User Interface

- a. [Logging on](#)
- b. [Staff vs public view](#)
- c. [Search](#)
- d. [Search results](#)
- e. [Basic Site Layout/Theming](#)
 - i. [Theme Modifications](#)
 - ii. [FL-Islandora Template Overview](#)

3. Permissions and users

- a. [Log on / log off](#)
- b. [Staff user roles](#)
- c. [Account management](#)

4. Collection Creation and Management

- a. [Collection Setup](#)
 - i. [Create a new collection](#)
 - ii. [Change the collection thumbnail](#)
 - iii. [Add a collection banner and description](#)
 - iv. [Create a collection information menu](#)
- b. [Collection Maintenance](#)
 - i. [Change a collection name](#)
 - ii. [Suppress/unsuppress display of a collection](#)
 - iii. [Move members of a collection to another collection](#)
 - iv. [Share members of a collection with another collection](#)
 - v. [Delete members of a collection](#)
 - vi. [Delete a collection](#)

5. Content models

- a. [Audio](#)
- b. [Basic image](#)
- c. [Binary Object](#)
- d. [Book](#)
- e. [Compound object](#)
- f. [Large Image](#)
- g. [Newspaper](#)

vii. [Dealing with Errors](#)

viii. [NEW: GUI to Offline Batch Ingest](#)

d. [Step-By-Step Instructions for all Content Models](#)

7. [Managing Content Objects](#)

- a. [Adding, replacing and deleting datastreams](#)
- b. [Migrating and sharing content objects](#)
- c. [Deleting content objects](#)
- d. [Workflow management](#)
 - i. [Inactive queue](#)

8. [Metadata](#)

a. [Metadata rules in FI-Islandora](#)

- i. [FLVC extension](#)
- ii. [Identifier \(IID\)](#)

b. [Using forms](#)

- i. [Creating metadata with forms](#)
- ii. [Setting default values in forms](#)
- iii. [Updating metadata in forms](#)

c. [Using pre-existing metadata](#)

9. [Suppressing collections and content from view](#)

a. [Overview of methods](#)

b. [Object policies](#)

- i. [Attaching object policies to content objects](#)
- ii. [Attaching object policies to collection objects](#)
- iii. [Removing and object viewing policy](#)

c. [Inactive objects](#)

- i. [Inactive queue](#)

d. [Using IP embargo](#)

10. [PALMM guidelines](#)

a. [The PALMM site](#)

b. [Creating collections in PALMM](#)

c. [Populating collections in PALMM](#)

d. [Removing content objects from PALMM](#)

11. [FI-Islandora and Mango](#)

12. [FL-Islandora and OAI-PMH Harvesting](#)

13. [Site Administration](#)

a. [User management](#)

b. [Embargo Setup](#)

c. [Binary Object Thumbnail Association](#)



All Versions

- Islandora 7.x-1.13**
- Islandora 7.x-1.12
- Islandora 7.x-1.11
- Islandora 7.x-1.10
- Islandora 7.x-1.9
- Islandora 7.x-1.8
- Islandora 7.x-1.7
- Islandora 7.x-1.6
- Islandora 7.x-1.5
- Islandora 7.x-1.4
- Islandora 7.x-1.3
- Islandora 7.x-1.2
- Islandora 7.x-1.1
- Islandora 7.x-1.0 (Beta)
- Islandora 6.x-13.1.x
- Islandora 6.x-12.2.x
- Islandora 6.x-12.1.x
- Islandora 6.x-11.3.x
- Islandora 6.x-11.2.x

CHILD PAGES

- Islandora
 - Start
 - Introduction
 - Usage
 - Administration
 - 3 more child pages

Current Release

This documentation covers the latest release of Islandora 7.x. For the very latest in Islandora, we recommend [Islandora 8](#).

Pages / Islandora

Start

Created by Melissa Anez, last modified by Rosie Le Faive on Jul 24, 2020

Welcome to the Islandora documentation space. This documentation is being constantly updated and refined, along with the Islandora stack. For static documentation matching a particular release, please select your version from the sidebar menu.

This documentation space is for Islandora 7.x, which pairs Drupal 7 with Fedora 3.x. [Islandora 8](#) (formerly known as Islandora 7.x-2.x or Islandora CLAW) is the next generation of Islandora, compatible with [Drupal 8](#) and [Fedora 5](#). Documentation for Islandora 8 can be found on [GitHub Pages](#).

Additional modules developed by members of the Islandora community to extend Islandora can be found on the curated [Islandora Awesome list](#).

Looking for downloads? Check out the [Release Notes](#) and [Downloads](#)

Start

- Introduction
 - About Islandora
 - Metadata in Islandora
 - Islandora Community
 - Accessing our Sandbox
 - Islandora as an Open Source Institutional Repository Solution
- Usage
 - Getting Started with Islandora
 - How to Add an Item to a Digital Collection
 - How to Batch Ingest Files
 - How to Create a New Islandora Collection
 - How to Edit an Object's Metadata
 - How to Make Changes to the Datastreams of an Object
 - How to Manage Collection Policies
 - How to Purge an Object
 - How to Purge Multiple Objects from a Collection
 - How to Move and Share Objects Between Collections
 - Islandora and Ingest Forms
 - How to Edit/Create Ingest Forms
 - Multi-inged Ingest Forms

A long complex test to fit the
context

AutoSave On | IslandoraVirtualCampus_2016March.xlsx - Excel | Search | File Home Insert Page Layout Formulas Data Review View Automate Developer Help Load Test Acrobat TEAM

Clipboard Font Alignment Number Styles Cells Editing Analysis Sensitivity Solver

	A	B	C	D	E	F	G
1	Category	Testing Procedure	Additional notes (Florida Islandora is a large multisite install. We have some features maintained in house, and some conventions enforced across sites to allow managing such a large install. Because of this, it is noted whether each feature being tested is generalizable across other institutions Islandora installs, or is something specific to Florida Islandora sites.)				
2	Check basic system configuration (before testing): Compare and adjust Drupal permissions for user roles	Look at [BaseURL]/islandora/object/dev%3Aroot#overlay=admin/people/permissions and make sure settings are the same. No module settings will change from a code upgrade, but a setting could be removed or a new one added. You are looking for any new or removed options. If a menu option has been added, then determine settings for this.	Generalizable				
3	Check basic system configuration (before testing): Look through all menus from Admin bar	No module settings will change from a code upgrade, but a setting could be removed or a new one added. You are looking for any new or removed options. If a menu option has been added, then determine settings for this.	Generalizable				
4	MODS forms associations	check that all appropriate forms are still associated with CMs	Florida Islandora specific: In Florida Islandora sites, all built-in forms are disabled, and then we have two forms enabled for all sites: (1) a "Simple MODS" form with basic info for workflows where someone is creating the metadata as they upload, and (2) a "Full MODS" form with all fields from MODS (as of March 2016, we are on MODS 3.5) which lets a user edit any field of MODS in cases where metadata has fields which aren't included in the "Simple MODS" form.				
5	user permissions	password reset from a user account (check that it sends a password reset email and that the password reset works)	Generalizable				
6	user permissions	Log in as Susan Submitter (Users with the submitter role can create new objects with metadata and can edit the metadata of objects for which they are the owning user, but they cannot edit the metadata of objects owned by others. They cannot delete objects or create collections. This role is appropriate for those new to the system or student workers who may need their submissions checked before the submissions are moved to a publicly accessible collection.)	Florida Islandora specific: Submitter is a user created in a user role which we set up to be the same across all sites.				
7	user permissions	Log in as Eddie Editor (Users with the editor role can create new objects with metadata and can edit the metadata of any object on the site regardless of the owning user. Editors can view and change object "properties" (the object label, owner, and state) and can set or delete an embargo. They cannot create or edit collections.)	Florida Islandora specific: Editor is a user created in a user role which we set up to be the same across all sites.				
8	user permissions	Log in as Sal Supervisor (Users with the supervisor role have all the privileges of the editor role. In addition, they can delete objects, which permanently removes those objects from the repository. They cannot create or edit collections.)	Florida Islandora specific: Supervisor is a user created in a user role which we set up to be the same across all sites.				
9	user permissions	Log in as Connie Colladmin (Users with the collection manager role have all the privileges of the supervisor role. In addition, they can create and delete collections, manage collection policies (i.e. define which content models can be used within a collection), migrate objects from one collection to another, and share objects between collections.)	Florida Islandora specific: Collection Administrator is a user created in a user role which we set up to be the same across all sites.				
		Log in as Annie Admin (Users with the site administrator role have all the privileges of the collection manager role. In addition, they can manage users of the site - they can create new users, assign user roles, and disable users. They can set up IP ranges for use in embargoes. They can upload and configure thumbnail associations for the binary object content model and configure OAI harvesting settings. If configured, they may also be able to add or edit non-Islandora repository site content such	Florida Islandora specific: Site Administrator is a user created in a user role which we set				

AutoSave Off | IslandoraTestingProcedures_FloridaVirtualCampus_2016March.xlsx - Excel | Search | Wilhelmina Randtke WR

File Home Insert Page Layout Formulas Data Review View Automate Developer Help Load Test Acrobat TEAM | Comments

Clipboard: Cut, Copy, Paste, Format Painter | Font: Calibri, 11, Bold, Italic, Underline, Paragraph | Alignment: Wrap Text, Merge & Center | Number: General, \$, %, 0.00, 0.00 | Styles: Normal, Bad, Good, Neutral | Cells: Insert, Delete, Format | Editing: AutoSum, Fill, Clear, Sort & Filter, Find & Select | Analysis: Analyze Data | Sensitivity: Sensitivity | Solver: Solver | Commands: Show ToolPak

	A	B	C	D	E	F	G
210	OAI-PMH	ListRecords&resumptionToken=	Generalizable				
211	OAI-PMH	"ListIdentifiers" (should give error message)	Generalizable				
212	OAI-PMH	"ListIdentifiers&metadataPrefix=oai_dc"	Generalizable				
213	OAI-PMH	"ListIdentifiers&metadataPrefix=oai_dc&resumptionToken=" (A good response will give an error message that resumptionToken is the only argument to be used.)	Generalizable				
214	OAI-PMH	"ListIdentifiers&resumptionToken=" (A good response will continue listing identifiers where the previous ListIdentifiers stopped off.)	Generalizable				
215	OAI-PMH	"ListIdentifiers&metadataPrefix=oai_dc&set=exampleSetHere" (A good response will show a list of identifiers in that collection.)	Generalizable				
216	OAI-PMH	"ListIdentifiers&metadataPrefix=oai_dc&from=2014-02-04" (A good response will list all identifiers newer than the date entered.)	Generalizable				
217	OAI-PMH	"ListIdentifiers&metadataPrefix=oai_dc&from=2014-02-04&set=islandora_sp_basic_image_collection"	Generalizable				
218	OAI-PMH	"ListRecords&metadataPrefix=oai_dc"	Generalizable				
219	OAI-PMH	"ListRecords&metadataPrefix=oai_dc&resumptionToken=" (A good response will continue listing records where the previous ListIdentifiers stopped off.)	Generalizable				
220	OAI-PMH	"ListRecords&metadataPrefix=oai_dc&from=2014-02-04" (A good response will list all records newer than the date entered.)	Generalizable				
221	OAI-PMH	"ListRecords&metadataPrefix=oai_dc&set=islandora_sp_basic_image_collection"	Generalizable				
222	OAI-PMH	"ListRecords&metadataPrefix=oai_dc&from=2014-02-01&until=2014-02-04&set=islandora_sp_basic_image_collection"	Generalizable				
223	OAI-PMH	"GetRecord&metadataPrefix=oai_dc&identifier="	Generalizable				
224	Islandora Scholar - Core	Check Scholar admin menu for changes	Generalizable				
225	Islandora Scholar - Core	Check display of citation objects	Generalizable				
226	Islandora Scholar - Core	Check display of thesis objects	Generalizable				
227	Islandora Scholar - Core	Test ingest of citation zip batch file	Generalizable				
228	Islandora Scholar - Core	Test ingest of thesis zip batch file	Generalizable				
229	Islandora Scholar - Core	Check derivative regeneration	Generalizable				
230	Islandora Scholar - Embargo	Check Scholar Embargo admin menu for changes	Generalizable				
231	Islandora Scholar - Embargo	Check previously created indefinite object-level embargoes	Generalizable				
232	Islandora Scholar - Embargo	Check previously created indefinite datastream-level embargoes	Generalizable				
233	Islandora Scholar - Embargo	Check newly created indefinite object-level embargoes	Generalizable				
234	Islandora Scholar - Embargo	Check newly created indefinite datastream-level embargoes	Generalizable				
235	Islandora Scholar - Embargo	Check newly created temporary datastream-level embargoes (did the embargo lift on expiration?)	Generalizable				
236	Islandora Scholar - Embargo	Check newly created temporary datastream-level embargoes (did the embargo lift on expiration?)	Generalizable				
237	Islandora Scholar - Google Scholar	Check meta tags in head of citation object HTML	Generalizable				
238	Islandora Scholar - Google Scholar	Check meta tags in head of thesis object HTML	Generalizable				
239							
240							

Two Examples

Example: Using someone
else's code

ILLiad

Enter your user information below.

Then press the Logon to ILLiad button to continue.

Eagle ID Number

Password

[Logon to ILLiad](#)

[? Forgot Password?](#)

[+ First Time Users](#)

Interlibrary Loan (ILL) services at Georgia Southern University are available to current faculty, staff, and students of Georgia Southern University and East Georgia College Statesboro Center. Community members should contact their school or public library for ILL service.

Faculty and distance learning students of Georgia Southern University's Statesboro campus are also eligible for ILL delivery service. Visit our [Interlibrary Loan LibGuide](#) for more information and guides on placing requests. As an academic ILL department, our mission is to secure materials to support teaching and research. The ILL service is not for requesting required textbooks or other course materials.

Faculty and distance learning students of Georgia Southern University are also eligible for ILLiad Document Delivery service - please go to [FAQ Page](#)

Internet Security: InterLibrary Loan offices of Georgia Southern University will never ask users to verify their personal ILLiad account information or change password or reactivate their ILLiad account via e-mail unless initiated by you, the user. If you have replied to any such email, please change your ILLiad account password immediately and report the incident to your ILL department.

Atlas Systems > ILLiad



A knowledge repository on everything ILLiad.

ALA Requests

- ▶ Adding ALA Lending Requests
- ▶ Sending ALA Borrowing Requests

Billing

- ▶ Adding Additional Fees to Invoices in the Billing Manager
- ▶ Adding Billing Charges in Borrowing

Authentication

- ▶ Lender password Change Only Changes the Password for NVTGC Logged into Client
- ▶ Atlas Auth Portal 1.3.x Release Configuration
- ▶ Authentication Overview
- ▶ Automatic Expiration of Users
- ▶ Automatic User Creation
- ▶ Configuring ILLiad to Use OpenAthens

See all 29 articles

Cancellations

- ▶ Borrowing Reasons for Cancellation
- ▶ Cancelled by Customer
- ▶ Cancelling Borrowing Requests

Borrowing Processing

- ▶ Tracking Unclaimed Interlibrary Loan Items
- ▶ Home Delivery Options
- ▶ Searching & Sending Requests: Choosing a Request to Process
- ▶ Searching & Sending Requests: Searching Local Holdings
- ▶ Searching & Sending Requests: Searching OCLC
- ▶ Searching & Sending Requests: Viewing Holdings Information

See all 23 articles

Client

- ▶ Converting Addons to Use the Chromium Browser
- ▶ Logging Into the ILLiad Client

Clipboard: Pin to Quick access, Copy, Paste, Copy path, Paste shortcut

Organize: Move to, Copy to, Delete, Rename

New: New folder, New item, Easy access

Open: Properties, Open, Edit, History

Select: Select all, Select none, Invert selection

← → ↕ ↑ This PC > Windows (C:) > Users > wrandtke > Documents > ILLiad > Melissa's ILL files for Mina

Search Melissa's ILL files for ...

Videos

- Creative Cloud Files
- OneDrive
- This PC
 - 3D Objects
 - Desktop
 - Documents
 - Downloads
 - Music
 - Pictures
 - Videos

- Windows (C:)
 - wrantke (\\ad.georgiasouthern.edu\GSFS\HmDir\All) (H:)
 - Dept Storage (R:)
 - LANE (\\ad.georgiasouthern.edu\gsfs\depts) (S:)
- Network

Name	Date modified	Type	Size
2022 ILLiad borrowing cheat sheets	8/23/2023 6:05 PM	File folder	
2022 ILLiad Document Delivery cheat she...	6/20/2023 9:20 AM	File folder	
2022 ILLiad lending cheat sheets	8/23/2023 6:05 PM	File folder	
2022 ILLiad misc notes	8/23/2023 6:05 PM	File folder	





Search in Drive



+ New

LIBR_Systems and Tec... > Software Documentati... > ILLiad ▾



- Priority
- My Drive
- Shared drives
- Shared with me
- Recent
- Starred
- Spam
- Trash
- Storage

Type ▾ People ▾ Modified ▾

Name ↓	Last modified ▾	File size	
Illiad server Upgrade: May 26, 2023 👤	May 26, 2023	6 KB	⋮
ILLiad Administration.docx 👤	8:47 AM	1 MB	⋮
iLLiad addon versions	Oct 17, 2022	1 KB	⋮

11.19 GB of 50 GB used

A short simple test to fit the
context.



🔍 ↶ ↷ 🖨️ ↵ 100% ▾ | Title ▾ | Arial ▾ | - 26 + | **B** *I* U A 🖋️ | 🔗 🗨️ 🖼️ 📑 | ⋮



- Later that morning:
 - Have librarians (Melissa and Mina) test the upgrade. They should process requests through ILLiad. They also should fill out the form at

<https://webill.lib.georgiasouthern.edu/illiad/illiad.dll> and check that the request came through.

- Mina to test:
 - Log in at <https://webill.lib.georgiasouthern.edu/illiad/illiad.dll> and submit a request, then message to Melissa did it pop up for her?
 - Log into ILLiad Staff Manager, and set up an account, then log in through that account.
- Melissa to test:
 - Log in to the software and look at common tasks. Note differences or problems. If there is a problem, email it to libtech-illiad-group@georgiasouthern.edu and cc' Brett Bacon bbacon@georgiasouthern.edu
- If there are no problems, then we're done.
- If there are problems, try and fix problems. If there's something major and it can't be fixed on May 26, then grab log files, roll back to the snapshot, and look into doing a development server.

- After the upgrade:
 - Take the message about down time off of ILLiad. (Brett Bacon edit

A Simple Approach

A Simple Approach

- 1) Take your own library's training material.
- 2) Click through each task that you train employees on.



GEORGIA
SOUTHERN
UNIVERSITY

Software Testing:

How to design a software testing
process for everyone

Wilhelmina Randtke, Head of Libraries Technologies and Systems, Georgia Southern University Libraries
WOLFcon 2023, August 24, 2023.